

SOUTHSIDE FELLOWSHIP

Creating brave spaces that nurture and inspire the human spirit

What Are We For? Open Tables - Making Circles Wider

June 15, 2025

"Encounter animates transformation."

~ Ched Myers

GATHERING

Welcome

Centering music

Call to Worship from **VT 947**

Hymn *Summoned By the God Who Made Us* **VT 1**
(omit v. 3)

LISTENING FOR THE WORD

The Poet's Word *Sometimes a Wild God*
by Tom Hiron (excerpts)

Hymn *Lord Jesus, Come and Overturn* **VT 146**

Offering

Scripture Luke 5:1-11 & 5:27-32

Sermon *Subversive Table Fellowship* David Moser

RESPONDING TO THE WORD

Hymn *I'm Gonna Eat at the Welcome Table* **VT 801**

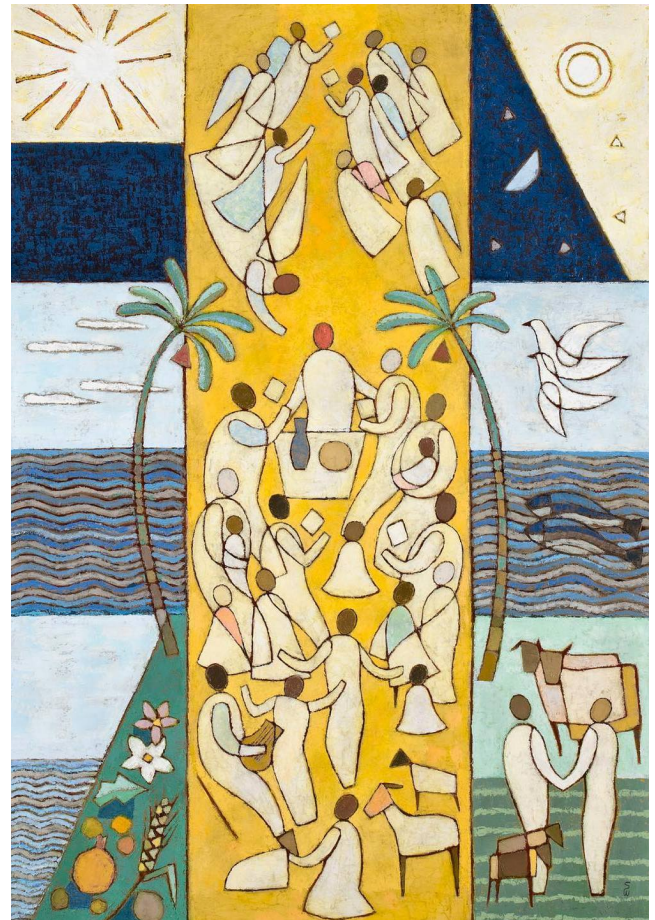
Sharing our lives and our prayers

Praying in the Way of Jesus

THE WORD IN THE WORLD

Hymn *Go Now in Peace, Worship Continues* **VT 829**
(vs. 1 & 3)

Benediction



Soichi Watanabe (Japanese, 1949–),
To God Be the Glory, 2009.
Acrylic on canvas, 52 × 39 in.

~~~~~  
*Southside Fellowship is an inclusive Anabaptist/Mennonite congregation that understands faith as a journey. At the core of our community is the boundless love of God, the justice-centered life of Jesus, and the mystery of the Spirit. We welcome all people to join us, including those who have been excluded elsewhere because of gender identity, sexual orientation, race, ethnicity, ability, economic status, marital status, age, or religious uncertainty.*